

# Note Duration - Basics

Scored:  
2010-10-21



## Whole Note & Rest

- Note: open center, no stem
- Rest: square box below D line



## Half Notes & Rests

- Note: open center, vertical stem
- Rest: square box above B line
- Two half notes = one whole note



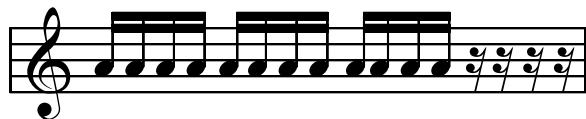
## Quarter Notes & Rests

- Note: closed center, vertical stem
- Rest: looks like a lightning bolt
- Two quarter notes = one half note



## Eighth Notes & Rests

- Note: closed center, vertical stem, single flag
- Rest: looks like a numeral "seven"
- Two eighth notes = one quarter note



## Sixteenth Notes & Rests

- Note: closed centre, vertical stem, double flag
- Rest: looks like a numeral "seven" with a double flag
- Two sixteenth notes = one eighth note

## Duration:

- The length of a musical note

## Stem:

- Vertical line above or below all notes except whole note
- Stems point up for all notes below the middle (B) line
- Stems point down for all notes above the middle (B) line
- Notes on the B line, stems may point either up or down

## Beam (Flag):

- Tail at the top of all notes smaller than a quarter note
- Any additional beam on a note decreases its duration by half
- Beams of notes in the same "beat" are joined together

## Dotted Notes & Rests:

- A dot after a note (or rest) increases the duration by half
- Example: a dotted half note equals three quarter notes